

ASSISTEP 

The Stair Assistant User manual



Limited warranty

What is covered

This limited warranty covers defects in materials and workmanship in this product.

What is not covered

- 1. This limited warranty does not cover any damage caused by the owner modifying, attempting to fix, or otherwise altering the product.
- 2. This also does not warrant that the product won't become obsolete at some point in the future.

Duration of the coverage

This warranty lasts for two (2) years from the date of original purchase of this product.

Who is covered?

This limited warranty covers only the original purchaser of the product. The limited warranty is not transferable to subsequent owners or purchasers of this product.

Date of installation

Name of the installer

How to obtain service

Contact our distributor in your region.

What our local distributor will do

- 1. Repair the product
- 2. Replace parts of the product that need replacing
- 3. Service the product

No other warranties apply

This warranty is the sole and exclusive warranty. No employee, dealer, agent or other person is authorized to alter this warranty or make any other warranty on behalf of our certified distributors.

Limitation of Liability

The distributor shall not be responsible for any incidental or consequential damages. Some countries, districts, or states do not allow the limitation or exclusion of relief, incidental, consequential, special, or indirect damages, or the limitation of liability to special amounts, so the above limitations or exclusions may not apply to you.

Address

Signature of the installer

1 Introduction to AssiStep



Congratulations with your AssiStep!

We know that a lot of people feel insecure and have trouble climbing stairs, which is why we've developed the AssiStep.

Our goal is to make it both safer and easier for people with reduced mobility to climb stairs. By providing an active solution, you can also maintain your ability to climb stairs for as long as possible.

The AssiStep is developed for people who experience reduced mobility, but those who are still able to climb stairs by the additional support and safety that the product offers. It's CE-certified for people up to 120 kg.

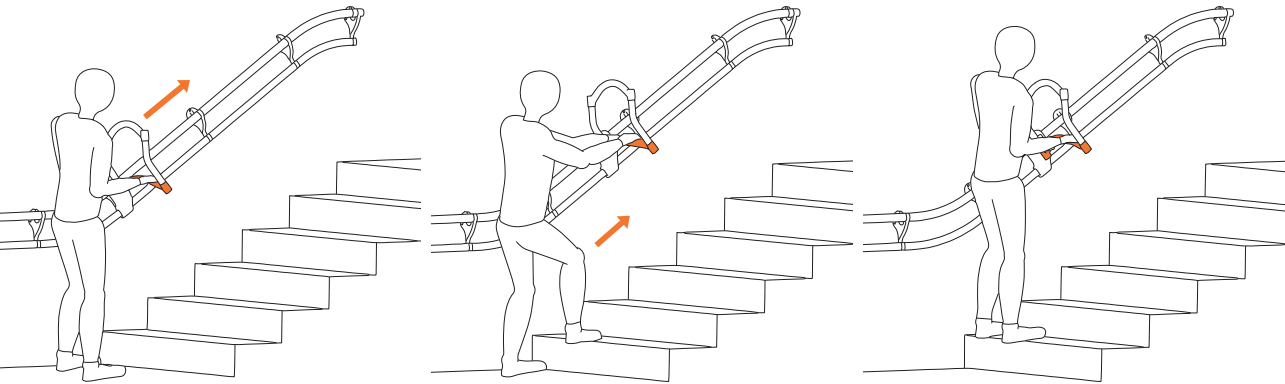
Safety information

- Use the product as described in this user manual, or as shown by trained health personnel.
- Do not make any other adjustments or modifications to the AssiStep than what is shown in this manual.
- Adjustment shall only be carried out by certified service personnel.
- If you suspect potential faults or defects with the product, the product shall not be used until inspected by certified personnel.
- When the handle is lifted in the outer section of the handle, it's movable in both directions. This shall not be done when ascending the stairs.
- AssiStep is a personal stair assistant and shall not be used by persons for whom it's not adjusted for.



2 How to use AssiStep

Ascending the stairs

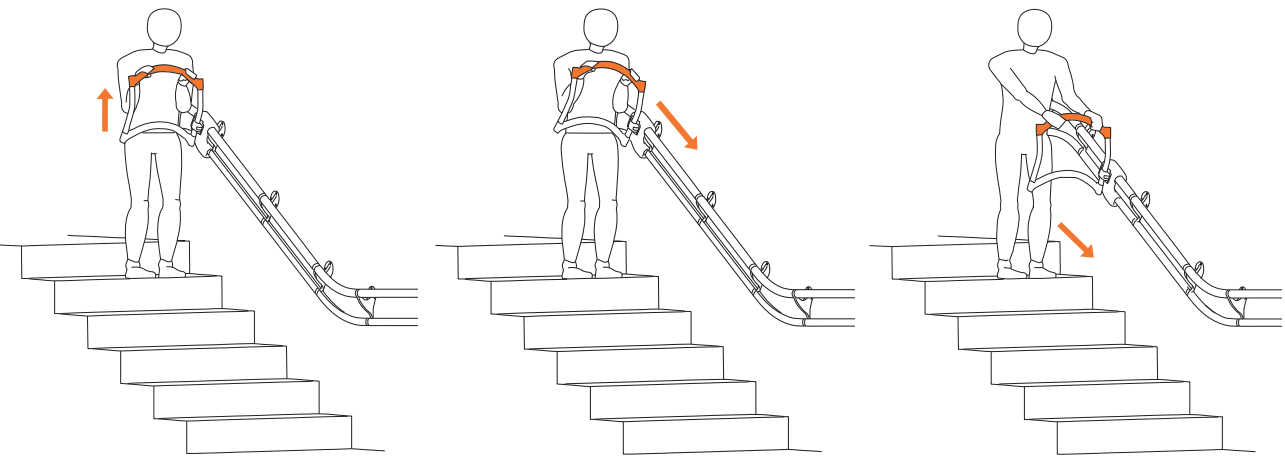


1. Hold your hands on the lower section of the handle and push the handle in front of you, and upwards the stairs, until your arms are fully stretched out.

2. When your arms are stretched out, apply weight downwards and towards yourself to the handle. The handle will be locked and you will get support to climb one step up the stairs.

3. Repeat point 1 and 2 for each step you take up the stairs, until you reach the end of the handrail and when the handle stops. The handle can then be folded to the side.

Descending the stairs



1. Get a good grip on the top section of the handle. Lift the handle slightly on the side that is opposite from the handrail. When the handle is lifted, the rolling-module is released from the safety rail.

2. When the handle is slightly lifted, move it down the stairs until your arms are stretched fully out. If you apply weight to the handle, or don't lift it enough, it stays locked for your safety.

3. Once your arms are stretched fully out apply weight to the handle. The handle will be locked and you will get support to climb down the stairs one step at a time. Repeat the points for each step until the handle stops by itself.



Folding the handle when not in use

Once you're finished using the AssiStep, you can fold the handle to the side and the AssiStep will not take up space in your stairway.

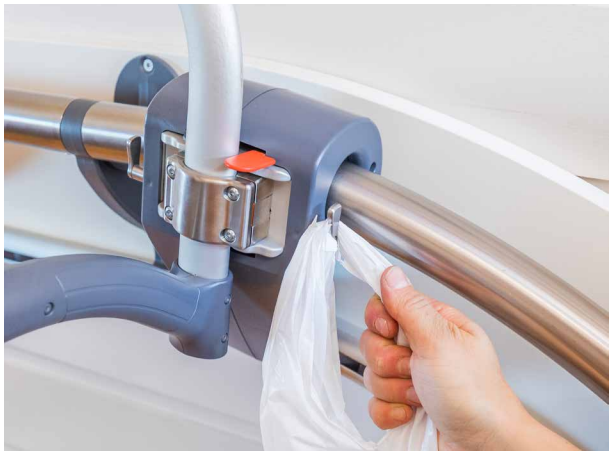
By pressing the orange button and at the same time pushing the handle upwards, the handle can be folded along the wall.

On the top of the staircase be careful so that the handle does not come in conflict with different obstructions such as doors or windows. If this is the case you can move the rolling module a bit down the staircase so the folded handle stops where the handrail stops.



Be aware of:

- If you do not fully stretch your arms out when moving the handle, you might get too close to the handle when you're moving a step up or down. When ascending, this can lead you to release the handle from the locked position and make it difficult to push it up the stairs.
- When the handle is folded either to the side or from the side to walking position, there is a potential finger trap between the rolling module and the bracket connecting the handle to the rolling module. Be careful while operating this function.



3 Choose your grip

The height of the handle can be customised to your height and is ergonomically shaped with two heights, which will give you a comfortable height both when ascending and descending the stairs. Choose the grip that will give you the best support and safety:

1. Standard grip

The most common way to move the handle is by having one hand on each side of the handle, both on the top and bottom section of the handle.

2. One hand

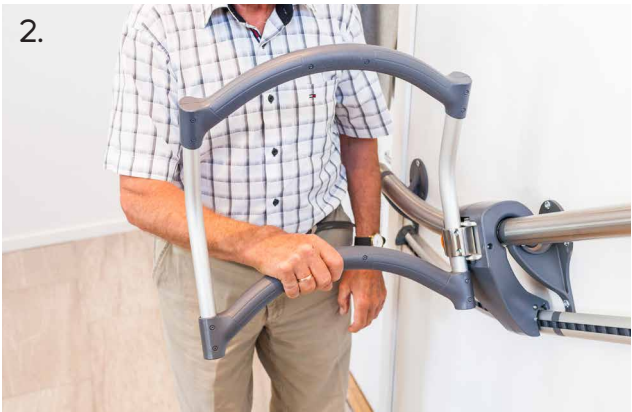
AssiStep can be used with one hand both when ascending and descending the stairs. We recommend that you hold your arm in the middle of the handle when pushing it upwards or lifting it downwards.

3. Combining the handle and the handrail

By holding one hand on the handrail and one on the handle you can get increased support when you are moving the handle in front of you.

4. Holding vertically on the handle

When descending the stairs, you may prefer to hold your hands on the side of the handle. With this grip the handle may be easier to lift and move forward and down the stairs.



4 Technical information

The AssiStep is CE-marked in accordance with 93/42/EEC Council directive of medical devices and developed and tested in compliance with:

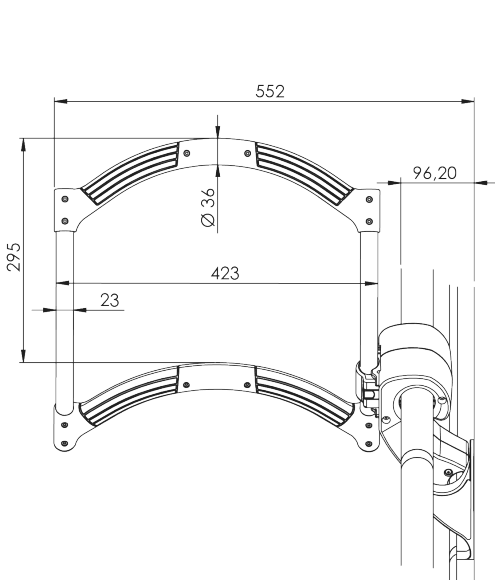
- EN ISO 12182:2012 Assistive products for persons with disability - general requirements and test methods
- EN ISO 14971:2012 Medical products - risk management

The AssiStep is a class 1 product and is approved for user weights up to 120 kg.

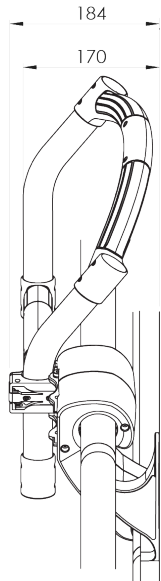
	Maximum user weight	120 kg
	User height	120-200 cm
	Cleaning	Use soap water and a soft cloth. Don't use solvents, high pressure cleaner or other cleaning methods that can be harmful to the product.

Specification [mm]:

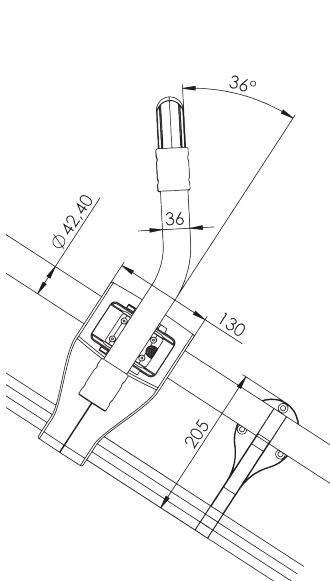
1. Handle, front view [mm]



2. Handle folded, side view [mm]



3. Handle, side view [mm]



Width of handle in use	55,2 cm (57,2 cm with backboard)
Width of handle when folded	18,4 cm (20,4 cm with backboard)
Diameter handrail	42,4mm (standard)
Mass, handle and rolling module	3,5 kg
Materials	Aluminium, stainless steel, ABS, POM
Operational temperature	5 - 30 degrees celsius
Temperature during transportation	0 - 40 degrees celsius
Warranty	2 years, if installation and service is done by certified personnel, and where the product is used as described in this user manual.

What is your experience with the Assistep?

If you have any ideas on how AssiStep can be improved to give you better support while climbing your stairs, please let us know. We are always looking for ways we can improve the AssiStep.

We would also love to hear about your experiences and stories with using the AssiStep. We look forward to hearing from you!



CONTACT

WWW.ASSISTEP.COM

INTERNATIONAL@ASSISTEP.COM

ASSITECH AS
FOSSEGRENDEN 30B
7038 TRONDHEIM